



## SOLAR LIGHT

With one year's hard work  
and 20 years of rich experience,  
we hope to solve any lighting  
problems for you

Vitality, Devotion, Growth, Excellence

We would not  
be so successful  
without your support

**Innovating  
the future  
of solar lighting**

[www.beinsolar.com](http://www.beinsolar.com)

To be  
the world brand  
of solar light

Amazing  
the World  
in Technology

Pursuing excellent service delivery  
Attach importance to professional teams  
Completely focus on our partners

# Preface

BEINSOLAR has collected many years of design concepts and wisdom and finally gathered them in this album to form a fresh, innovative, and stunning product, but it does not only present in this album.

Here, we look forward to communicating with more experts, using these works in the form of products to benefit more projects, and end users and realize their due value!

by Beinsolar





*We always do our best to make every project perfect*



# Solar Table Lamp



If you are still using a simple plug-in table lamp, or you have made great progress in using a common portable table lamp, then you can start to consider a new solar table lamp to truly realize your indoor and outdoor all-around applications.

BEINSOLAR provides a variety of solar table lamp designs, not only colorful color matching but also providing visual satisfaction in dopamine that fully stimulates you in the product shape.

Below, please enjoy the design.



**Zenith** THM-22

*500LM*

# **Geometry on your table**



Solar Panel: Mono-crystalline  
Battery: Li-ion  
LED: 500lm, 4000K, Ra >70  
Lens: Anti-glare  
Lighting Modes: 4 modes  
Input: Type-C  
Waterproof: IP44  
Material: ABS & PS







# Solar Wall Light

*Make our users different*



Are you tired of Amazon's  
cookie-cutter solar wall light?

It's time to replace it.

BEINSOLAR subverts the traditional  
concept and redefines the design  
of wall lamps. The simple  
geometric shape is cut into  
different amazing models in the  
hands of the designer, which is completely  
different from the competition but  
surpasses the competition.

Below, please enjoy the design.

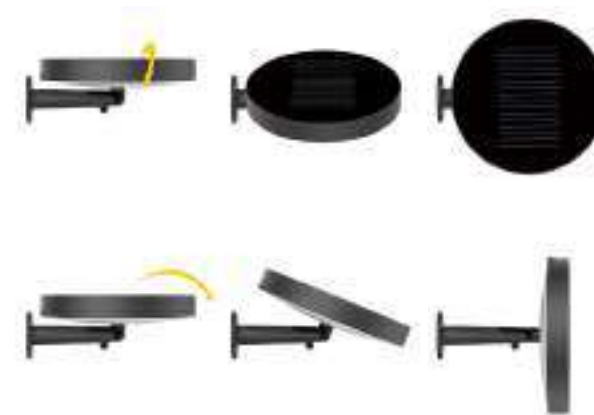
**Prism** FTM-76

*1000LM*

# Moving Shadows



Solar Panel: Mono-crystalline  
Battery: Li-ion  
LED: 1000lm, 4000K, Ra >70  
Lens: Anti-glare  
Lighting Modes: 4 modes  
PIR: 120° 5m.Max  
Waterproof: IP54  
Material: ABS & PS







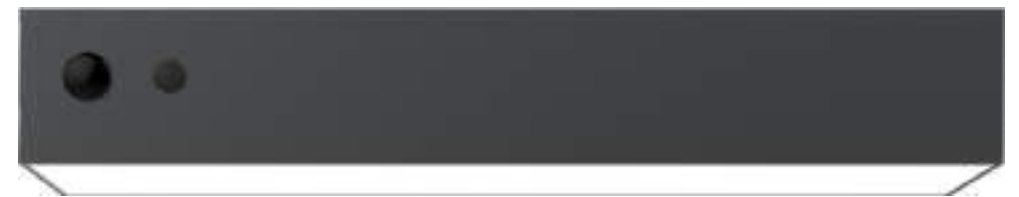
**Flux** TXM-34

*1000LM*

**Simple But  
Powerful**



Solar Panel: Mono-crystalline  
Battery: Li-ion  
LED: 1000lm, 4000K, Ra >70  
Lens: Anti-glare  
Lighting Modes: 4 modes  
PIR: 120° 5m.Max  
Waterproof: IP54  
Material: ABS & PS









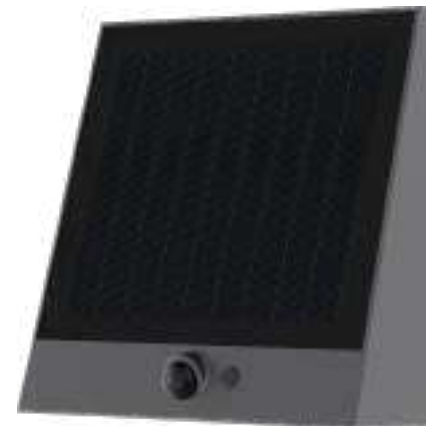
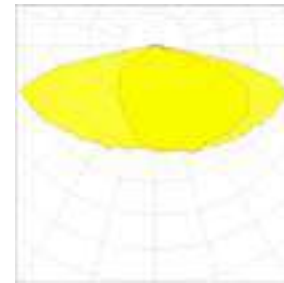
**Flux** TXM-35

*1000LM*

# Type 4 Light Distribution



Solar Panel: Mono-crystalline  
Battery: Li-ion  
LED: 1000lm, 4000K, Ra>70  
Lens: Type 4S  
Lighting Modes: 4 modes  
PIR: 120° 5m.Max  
Waterproof: IP54  
Material: ABS & PC







**Flux** TXM-36

*1000LM*

# Spherical Wall Light With PIR



Solar Panel: Mono-crystalline  
Battery: Li-ion  
LED: 1000lm, 4000K, Ra>70  
Lens: Anti-glare  
Lighting Modes: 4 modes  
PIR: 120° 5m.Max  
Waterproof: IP54  
Material: ABS & PC







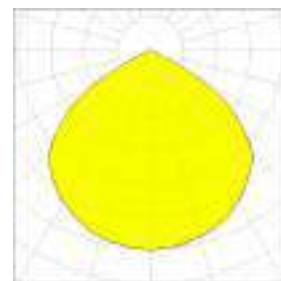
**Flux** TXM-38

*1000LM*

# Retro But Modern Design



Solar Panel: Mono-crystalline  
Battery: Li-ion  
LED: 1000lm, 4000K, Ra>70  
Lens: Black sky  
Lighting Modes: 4 modes  
PIR: 120° 5m.Max  
Waterproof: IP54  
Material: ABS & PC









**Flux** FTM-93

700LM

# Single Beam Up & Down Lighting

Solar Panel: Mono-crystalline

Battery: Li-ion

LED: 700lm, 4000K, Ra>70

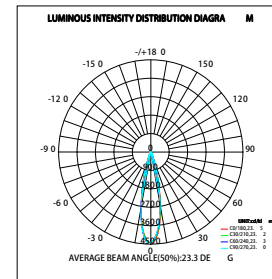
Lens: Symmetrical 22°

Lighting Modes: 4 modes

PIR: NA

Waterproof: IP54

Material: ABS & PC



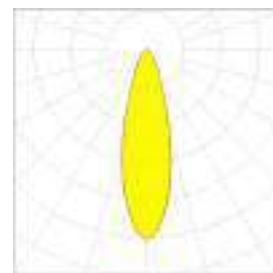


**Flux** TXM-42

700LM

# Single Beam Up & Down Lighting

Solar Panel: Mono-crystalline  
Battery: Li-ion  
LED: 700lm, 4000K, Ra>70  
Lens: Up@Symmetrical 22°,  
Down@cut-off type  
Lighting Modes: 4 modes  
PIR: NA  
Waterproof: IP54  
Material: ABS & PC





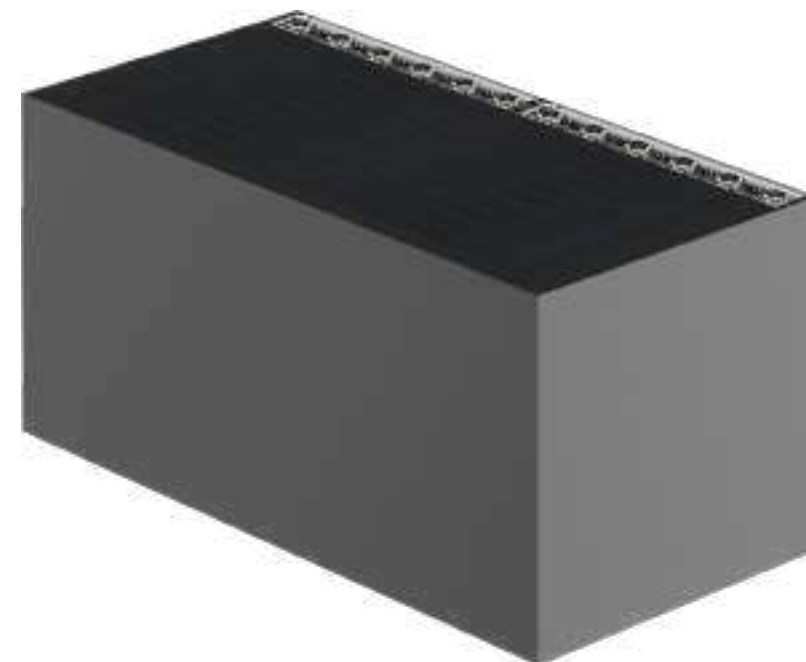
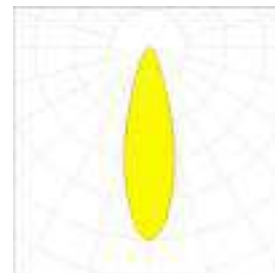


**Flux** TXM-43

*1400LM*

# **Twin Beams Up & Down Lighting**

Solar Panel: Mono-crystalline  
Battery: Li-ion  
LED: 1400lm, 4000K, Ra >70  
Lens: Up@Symmetrical 22°,  
Down@cut-off type  
Lighting Modes: 4 modes  
PIR: NA  
Waterproof: IP54  
Material: ABS & PC







# Solar Garden Light

*Make our  
users different*

People have never stopped pursuing a unified style in the decoration style of their homes, which places high demands on designers.

BEINSOLAR's designers are unswervingly determined, and they carry out constant innovation with this idea when designing other types of lamps, which are simple but not mediocre.

Below, please enjoy the design.



**Axis** TXM-20W

350LM

**Neo-retroism**



Solar Panel: Mono-crystalline  
Battery: Li-ion  
LED: 350lm, 4000K, Ra>70  
Lens: Transparent  
Lighting Modes: 4 modes  
PIR: NA  
Waterproof: IP54  
Material: Aluminium & ABS



The lamp bulb  
can be replaced









**Axis** THM-20S

350LM

**Neo-retroism**



Removing the lamp cap  
can be used as  
a solar table light

Solar Panel: Mono-crystalline  
Battery: Li-ion  
LED: 350lm, 4000K, Ra>70  
Lens: Transparent  
Lighting Modes: 4 modes  
PIR: NA  
Waterproof: IP54  
Material: Aluminium & ABS



The lamp bulb  
can be replaced







**Axis** THM-20L

*350LM*

**Neo-retroism**



Removing the lamp cap  
can be used as  
a solar table light

Solar Panel: Mono-crystalline  
Battery: Li-ion  
LED: 350lm, 4000K, Ra>70  
Lens: Transparent  
Lighting Modes: 4 modes  
PIR: NA  
Waterproof: IP54  
Material: Aluminium & ABS



The lamp bulb  
can be replaced







**Zenith** FTM-25PRO/35PRO

*100LM*

**Hot Seller  
since 2014**

Solar Panel: Mono-crystalline  
Battery: Li-ion  
LED: 100lm, 3000K, Ra >70  
Lens: Transparent  
Lighting Modes: 2 modes  
PIR: NA  
Waterproof: IP54  
Material: Aluminium & PC









*Design comes from life*